



A STEP TOWARDS A DYNAMIC
SHOPPING EXPERIENCE




Site Address:
Aster Walk, Sector-36, Sohna - 122103, Haryana

☎ 97174 36397 | ✉ info@4sasterwalk.com | 🌐 www.4sasterwalk.com

RERA No.: RC/REP/HARERA/GGM/877/609/2024/104 Dated: 10.10.2024
Website: haryanarera.gov.in).

**ASTER
WALK**



It's natural for people to want
their shopping destinations and
socializing spaces to be arranged just as
they want them. Now there is one place
that embraces this idea. You are at

ASTER
WALK

WHY SOHNA

Sohna, located in the southern part of Gurugram, is a rapidly developing area known for its scenic beauty and modern infrastructure. Nestled in the foothills of the Aravalli range, it offers a serene environment, making it a sought-after destination for residential and commercial projects.

With its proximity to key areas of Gurugram and excellent connectivity via major highways like the Delhi-Mumbai Expressway, Sohna is quickly emerging as a prime real estate hub. The area boasts a blend of natural charm and urban convenience, attracting investors and home buyers alike.





Artistic Image

Find it, Love it, Own it!

Shopping is more than just purchasing items; it's an experience that blends necessity with enjoyment. Whether strolling through a bustling mall, or browsing boutique stores, shopping offers a sense of discovery and satisfaction. It reflects personal style, fulfills needs, and sometimes serves as a social activity or a stress-reliever. With endless options available, from luxury brands to local markets, shopping caters to every taste and budget, making it an integral part of our daily lives.



Artistic Image

Daily Needs, Always Ready.

Daily needs are the essentials that keep life running smoothly - food, hygiene products, and basic utilities. They support our well-being and ensure we're prepared for everyday tasks. From the groceries we buy to the household items we rely on, these necessities make life more convenient and manageable, allowing us to focus on what matters most.



Artistic Image

Discover. Delight. Repeat.

Restaurants are lively spaces where diverse cuisines meet community. They invite guests to explore flavors while fostering connections among friends and families. With skilled chefs and welcoming staff, each visit becomes a memorable celebration of good food and shared moments.



Artistic Image

Play Hard, Win Big!

A gaming zone is an electrifying space tailored for gamers to dive into virtual worlds. With comfortable seating and vibrant decor, these zones create an inviting atmosphere for socializing and multi-player fun. They also host tournaments and events, fostering a strong sense of community. Whether you're looking to conquer challenges or connect with fellow gamers, a gaming zone is where excitement and camaraderie come alive.



DEVELOPMENT, IT'S WHAT TURNS A
GOOD INVESTMENT INTO A
GREAT INVESTMENT



ASTER WALK STRATEGIC LOCATION

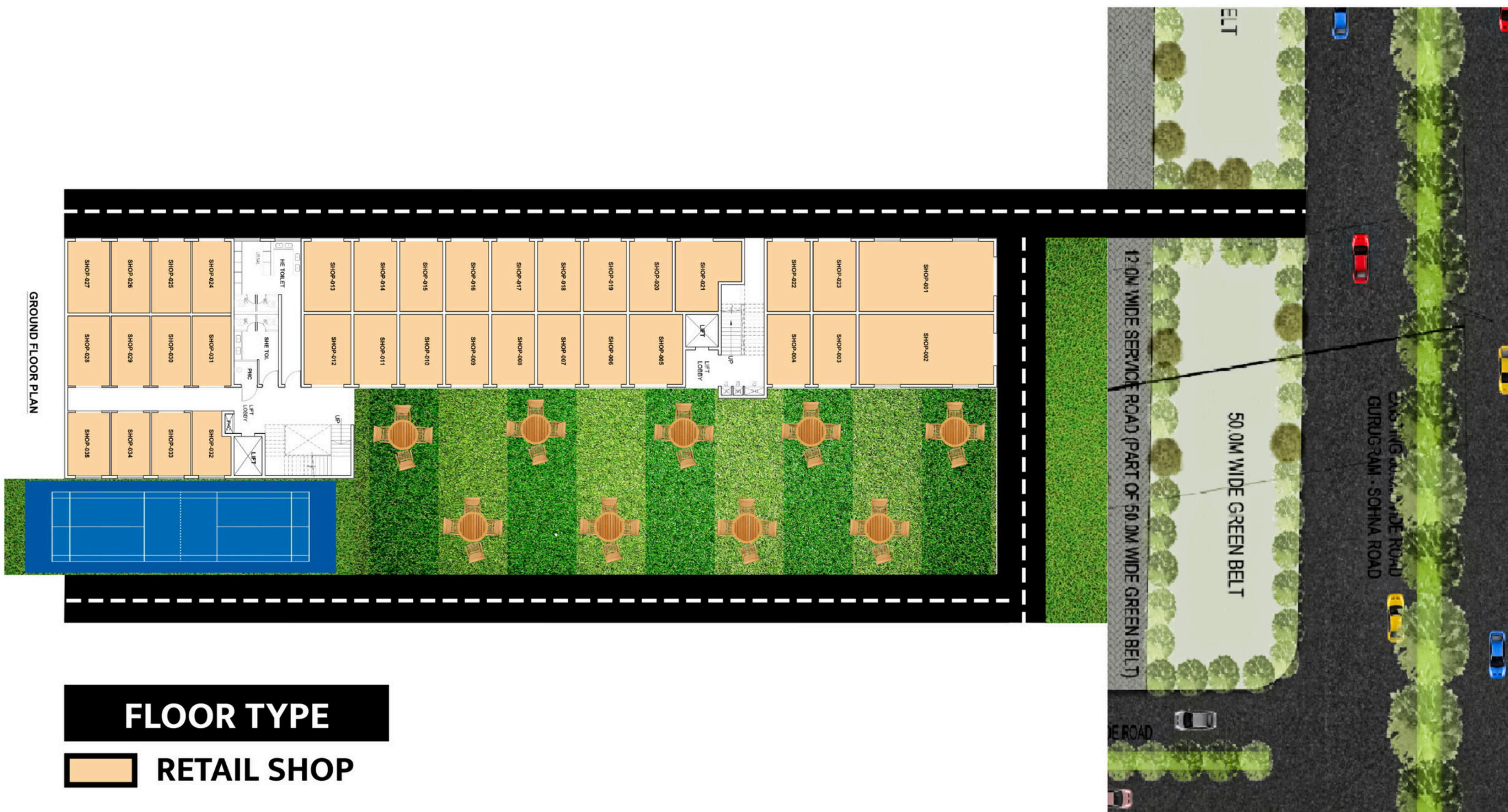
- Located in Sector - 36, Sohna
- On Gurgaon - Sohna Elevated Corridor
- Close to Delhi – Mumbai Expressway
- 5minutes driving distance from the KMP Expressway
- 15 minutes driving distance from Rajiv Chowk, Gurugram
- 40 minutes from Indira Gandhi International Airport
- International Schools, Universities & Hospitals in proximity
- Best-in-class Hotels in the vicinity



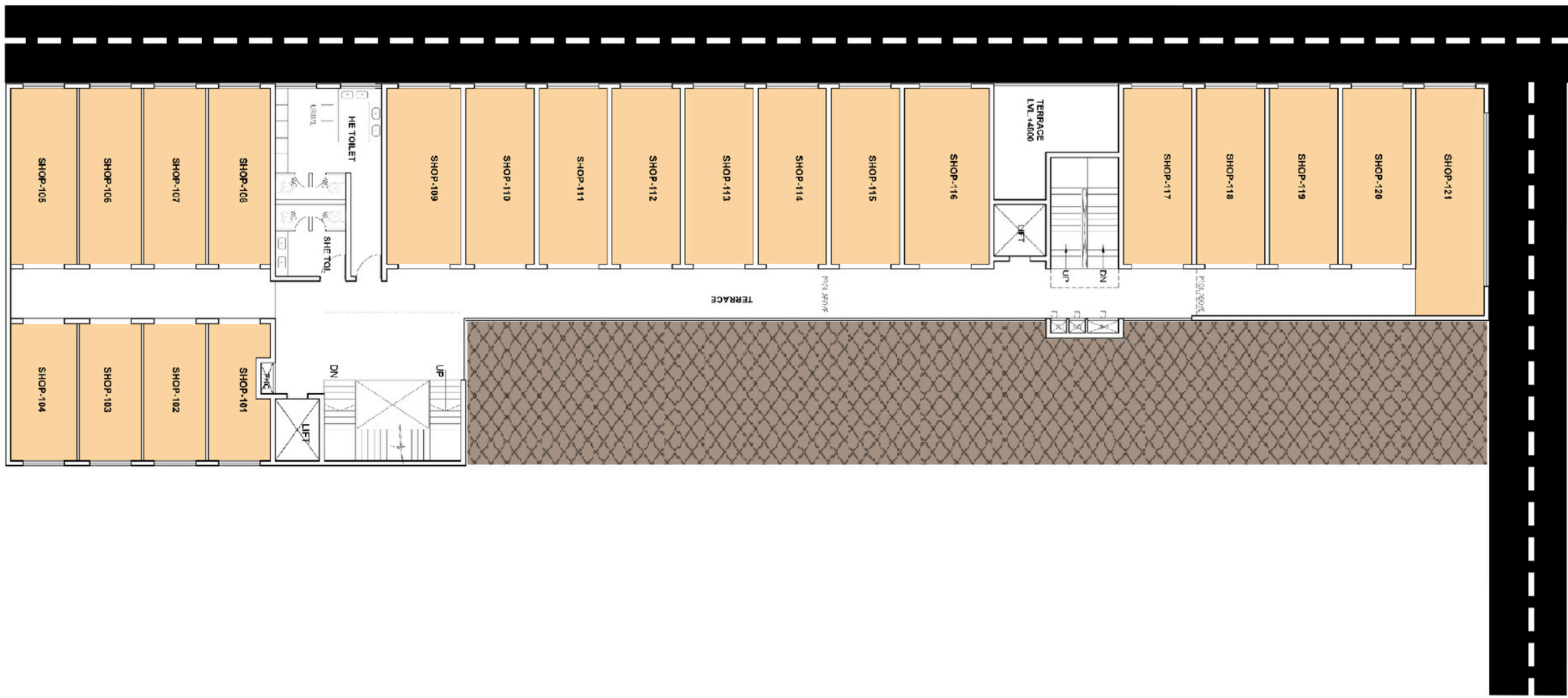
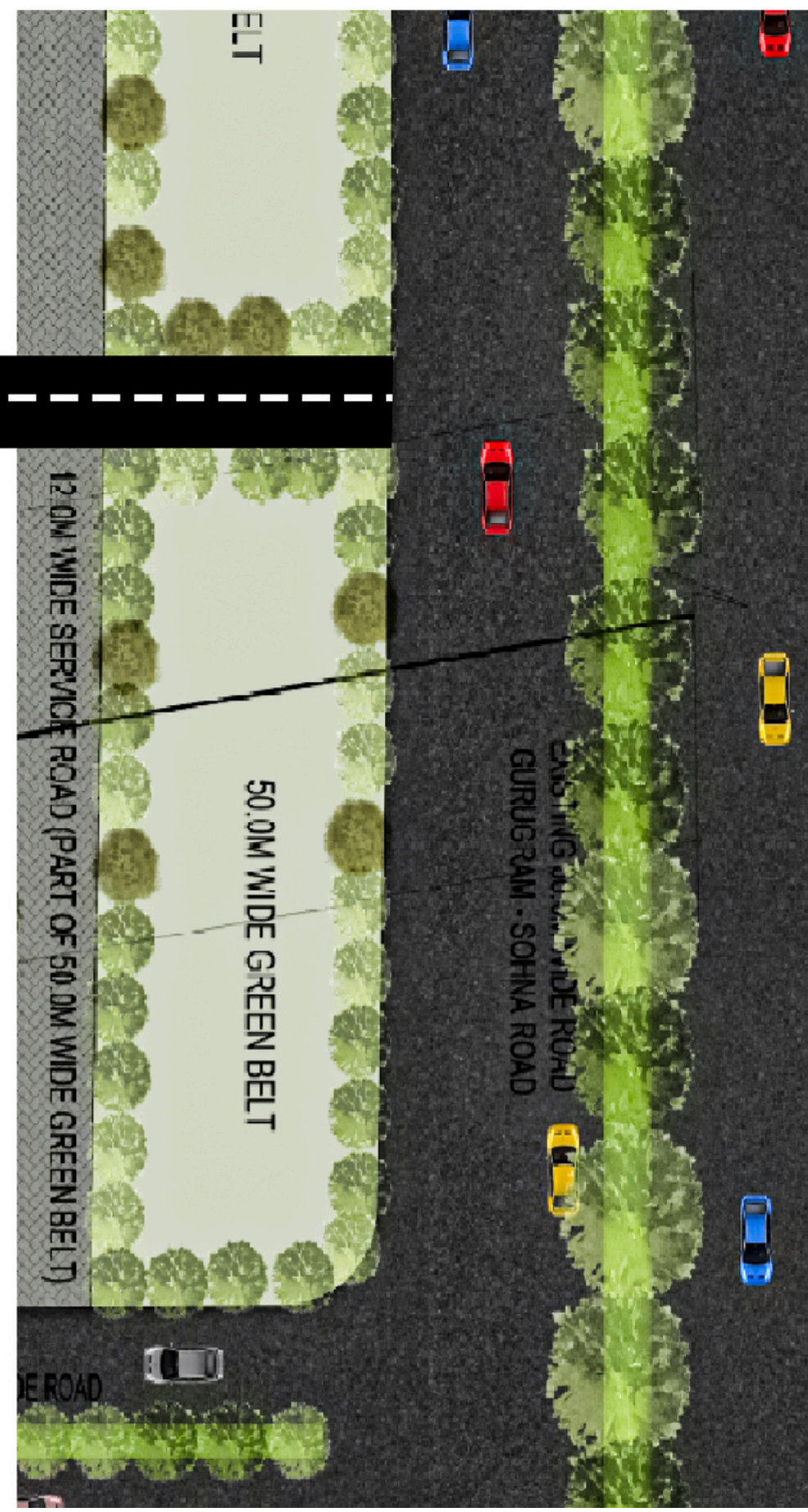


- 01. PARKING
- 02. COMMERCIAL
- 03. RESIDENTIAL TOWER (A, B, C & D)
- 04. COMMUNITY
- 05. CRECHE
- 06. KIDS PLAY AREA
- 07. OUT DOOR GYM
- 08. BADMINTON COURT
- 09. OUTDOOR SITTING AREA
- 10. OPEN AIR THEATRE
- 11. VOLLYBALL COURT
- 12. BASKETBALL COURT
- 13. GREEN LAWN
- 14. JOGGING TRACK
- 15. ELECTRICAL SUBSTATION

GROUND FLOOR



FIRST FLOOR



FLOOR TYPE

 RETAIL SHOP

FIRST FLOOR PLAN



Pocket